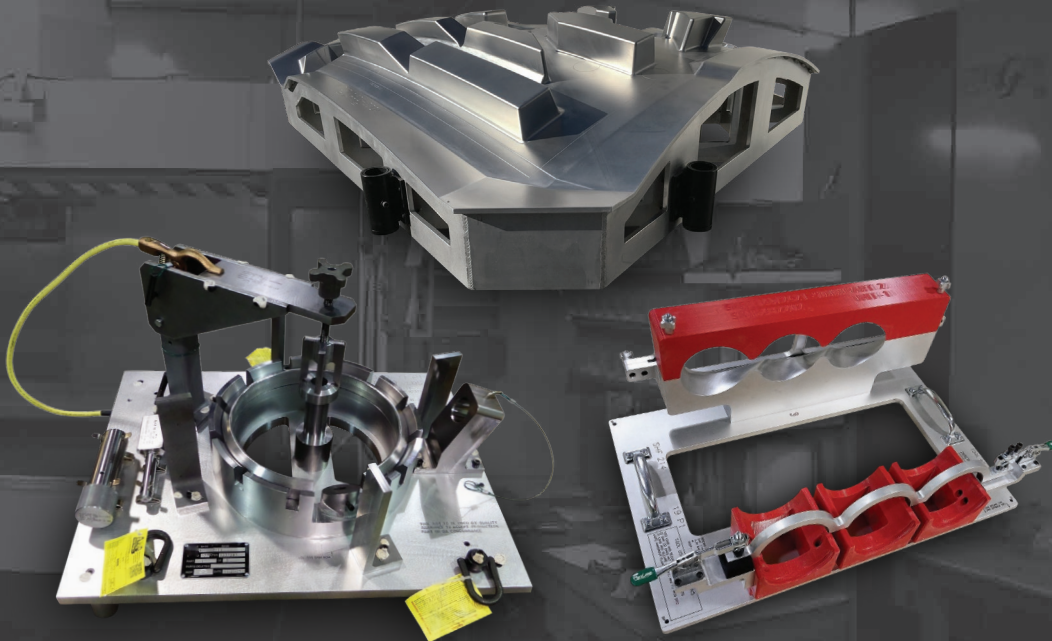




WOODLAND TRADE CO.

TOOL DESIGN & FABRICATION SERVICES

AWARD WINNING TOOLING EXPERTS



2020 CAPABILITIES CATALOG

**TOOL DESIGN, FABRICATION & 3D PRINTING SERVICES FOR THE AEROSPACE,
AUTOMOTIVE, MARINE, MEDICAL & SPACE INDUSTRIES**



AWARD WINNING SUPPLIER

2X Boeing Supplier of the Year

Woodland Trade has won Boeing's prestigious Supplier of the Year Award in 2007 and 2017. We have also been nominated in 2014, 2015, 2016 and 2018!

12X Boeing Supplier Excellence Award Winner

Woodland Trade has been awarded Boeing's Supplier Excellence Award every year it's been offered.

TOOL DESIGN AND FABRICATION SERVICES

Engineering Services

Tool Design, Material Selection, Reverse Engineering & Manufacturing Process Selection.

Boeing DPD/MBD Approved

Woodland Trade is Boeing DPD/MBD approved. We also hold approved Delegation from Boeing for tool inspection.

Ease of Procurement

Woodland Trade's in-house tool design capabilities allows you to place a single PO for your tool design and fabrication needs. This strategy shortens lead-times, lowers risk and provides an increased level of accountability that is unique in the tooling world.

QUALITY IS ASSURED

ISO 9001:2015 Certified

Woodland Trade's quality system is ISO certified. We have documented and implemented a complete system of standardized business processes assuring our tools meet your requirements.

Digital Inspection = Accuracy

Woodland Trade utilizes advanced digital metrology equipment to ensure every tool meets or exceeds your exacting requirements.



INNOVATIVE MANUFACTURING

Woodland Trade blends digital manufacturing including CNC Machining, Additive Manufacturing and Digital Inspection with traditional hand craftsmanship to produce the finest tooling available.

CERTIFICATIONS

- ISO 9001:2015
- ITAR Registered
- ASQ Certified Employees
- Boeing DPD/MBD Certified Tooling Shop
- Boeing Delegated Inspection Facility

INSPECTION EQUIPMENT

- (3) FARO Quantum S Portable CMM Arm
- FARO VANTAGE Laser Tracker
- FARO LLP (Laser Line Probe)

SOFTWARE

- Catia V5-6 R2019
- Enovia V5-6 R2019
- SurfCAM Traditional 2016 R2
- MasterCAM 2019
- Vericut V8.2
- Kubotek Validation Tool 2017
- VeriSurf 2018
- ANSYS SpaceClaim 2017
- Insight, Simplify3D & Eiger (3D Printing)

SUPPORT EQUIPMENT

- BOSS HP-5598 Laser Engraver
- Despatch Walk-In Curing Oven

METAL FABRICATION

Woodland Trade's machining capabilities includes the following.

CNC MILLING MACHINES

Machine:	Style:	Axis:	Taper:	RPM:	Travel:
HAAS VF-5 XT	Vertical Milling	3 Axis	Cat50	7,500	X= 60.0", Y= 26.0", Z= 25.0"
HAAS VF-4	Vertical Milling	3 Axis	Cat40	7,500	X= 50.0", Y= 20.0", Z= 25.0"
(2) HAAS VR-11	Vertical Milling	5 Axis	Cat40	10,000	X= 120.0", Y= 40.0", Z= 30.0", A= +/-32 Deg, B= +/-32 Deg
FPT Stinger	Gantry	5 Axis	HSK63A	22,000	X= 68.8976", Y= 55.1181", Z= 23.622", A= +/-100 Deg, C= Infinitely Continuous
FPT DinoMax	Gantry	5 Axis	HSK63A	18,000	X= 157.4803", Y= 106.2992", Z= 51.1811", B= +115/- 97 Deg, C= Infinitely Continuous

CNC ROUTERS

Machine:	Style:	Axis:	Travel:
DMS	Gantry	5 Axis	X= 132", Y= 77", Z= 49"
Motion Master	Gantry	5 Axis	X= 250", Y= 122", Z= 54"
DMS	Gantry	3 Axis	X= 240", Y= 113", Z= 37"
Komo VR-512	Gantry	3 Axis	X= 150", Y= 60", Z= 16"

COMPOSITES FABRICATION

Woodland Trade has decades of high and low temperature composite tooling design & fabrication experience. Composite tooling is used for prototypes & low-medium volume production rates with reliable results.

ASSEMBLY

Woodland Trade has skilled Tradesmen capable of supporting your mechanical, electrical, pneumatic and hydraulic assembly needs.

3D PRINTING

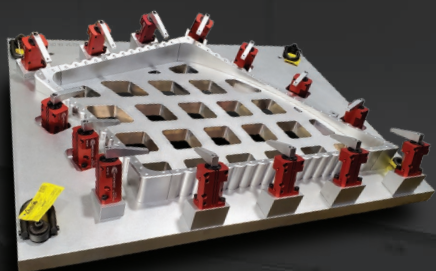
Additive Manufacturing allows us to make tooling faster, better, cheaper and safer than ever before.

ADDITIVE MANUFACTURING MACHINES

Printer:	Process:	Build Envelope:	Materials:
Stratasys Fortus 900mc Gen II	FDM	36 x 24 x 36 in	ABS-ESD7, ABS-M30, ABS-M30i, Antero 800NA, ASA, FDM Nylon 6, FDM Nylon 12, FDM Nylon 12CF, PC, PC-ABS, PC-ISO, PPSF, ST-130, ULTEM 1010, ULTEM 9085
Stratasys Fortus F900	FDM	37 x 24 x 36 in	ABS-ESD7, ABS-M30, ABS-M30i, Antero 800NA, ASA, FDM Nylon 6, FDM Nylon 12, FDM Nylon 12CF, PC, PC-ABS, PC-ISO, PPSF, ST-130, ULTEM 1010, ULTEM 9085
AON-M2	FDM	18 x 18 x 25 in	ABS, ASA, Nylon, PC, PEEK, PEKK, PETG, PSU, PPSU, TPC, TPU, ULTEM
Markforged X7	FDM and CFF	13 x 10.5 x 7.75 in	Onyx (Nylon w/ Chopped Carbon Fiber), Continuous Fibers (Carbon Fiber, Fiberglass, HSHT Fiberglass, Kevlar)
Markforged Metal X	Metal ADAM	11.75 x 8.5 x 7.0 in	17-4 Stainless Steel (Beta); 316L Stainless Steel, Tool Steel (A2 And D2), Inconel 625, Titanium (Ti-6Al-4V)



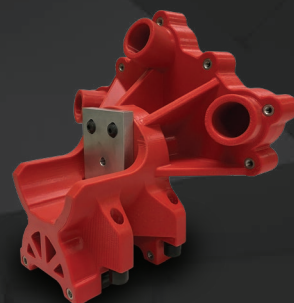
CONTACT US TODAY FOR A FREE ESTIMATE!



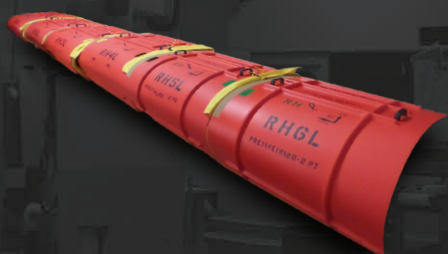
ROUTER FIXTURES



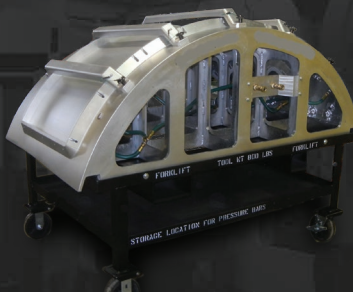
BONDING CAROUSELS



DOTCO ROUTING FIXTURES



PROTECTIVE EQUIPMENT



BONDING JIGS



BOND ASSEMBLY JIGS



DRILL JIGS



VACUUM ROUTING FIXTURES



ROTOMOLDS



253-476-9985
sales@woodlandtrade.com
www.woodlandtrade.com



WOODLAND TRADE CO.
TOOL DESIGN & FABRICATION SERVICES

Woodland Trade Company, Inc.
7625 East McKinley Ave.
Tacoma, WA 98404 USA